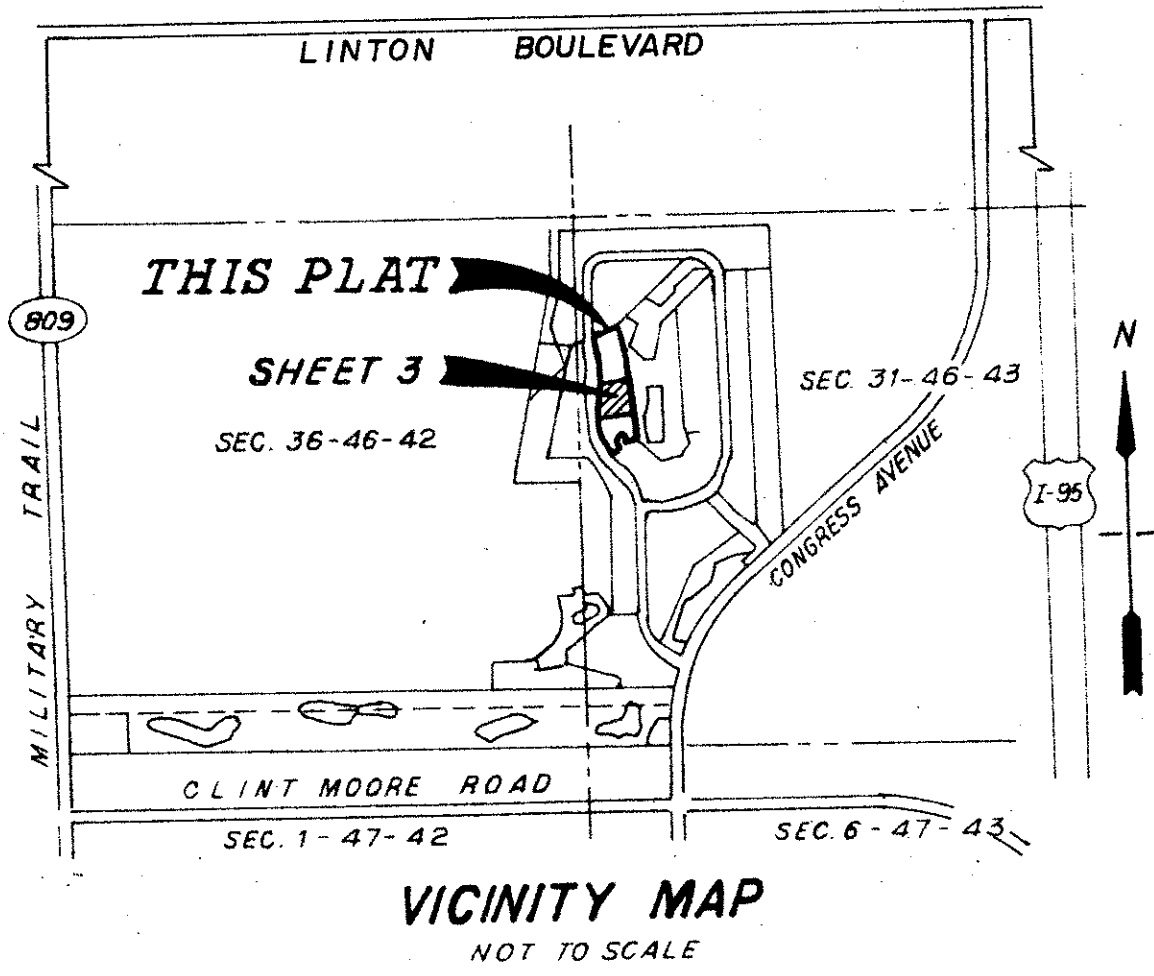


ANTIGUA POINT 285-013

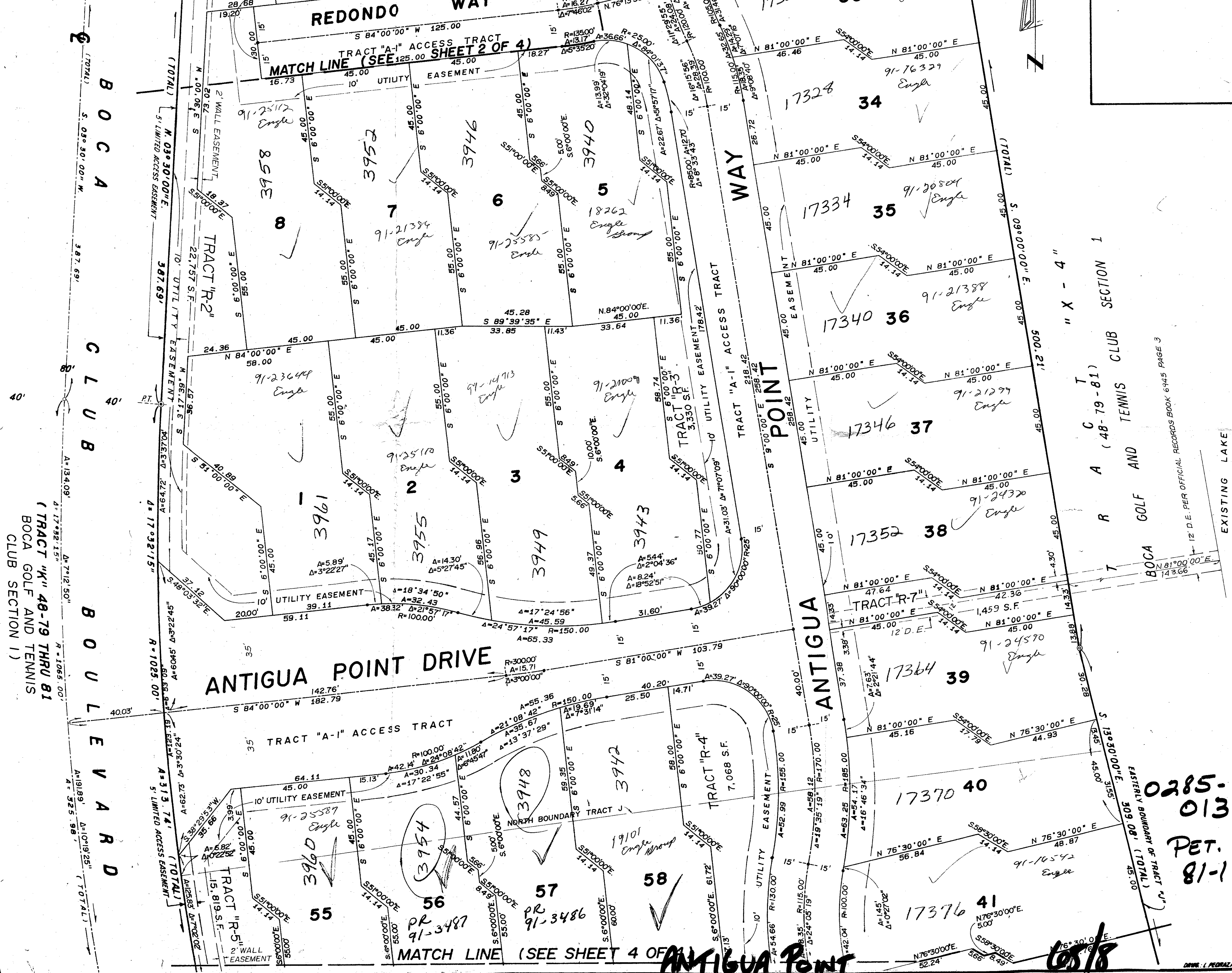
BOCA GOLF AND TENNIS CLUB P.U.D.
A PLAT OF A PORTION OF SECTION 31, TOWNSHIP 46 SOUTH, RANGE 43 EAST, INCLUDING A REPLAT OF A PORTION OF TRACT "J" SPYGLASS WALK (PLAT BOOK 54, PAGE 1)
PALM BEACH COUNTY, FLORIDA

C.C. WIMMINGHAM CORPORATION - LAND SURVEYORS - 1040 N.E. 45TH STREET - OAKLAND PARK, FLORIDA, 33334

SHEET 3 OF 4



AUGUST 1989 SCALE: 1" = 20'



8

TAL 573

PAGE 8
BOOK 68
FLOOR PLAN # 220B
TRACT RS
CUB # 22
285-013
BOCA GOLF & TENNIS CLUB

0285-013
PET. 81-1

12 I.D.E. PER OFFICIAL RECORDS BOOK 6345 PAGE 3

6518